



SERIES 39

Direct Mount Design 3-WAY BALL VALVES Stainless Steel and Carbon Steel Full Port or Reduced Port 1/4" - 1" 1000 PSI 1 1/4" - 2" 800 PSI

Take a good look, it may be your future

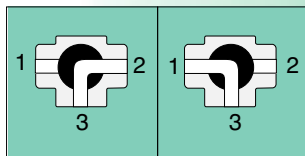
DESIGN FEATURES

- **Dual Pattern ISO 5211 Mounting Pad with Square Stem**
Allows a pneumatic or electric actuator bolted directly to the top of ball valves, No Bracket and Adapter are required, for greater reliability, easy installation and improved cycling life.
- **Four Seats Design**
Prevents leakage in the cavity area and maintains proper alignment of the ball.
- **Live Loaded Stem Design**
Self-compensating stem seal automatically adjusts for wear and fluctuations in pressure and temperature.
- **Blow-Out Proof Stem**
Prevents stem from blowing-out, for maximum safety.
- **O-Ring Stem Seal**
Enhances stem wear and maintains stem alignment, provides extra longer service life.

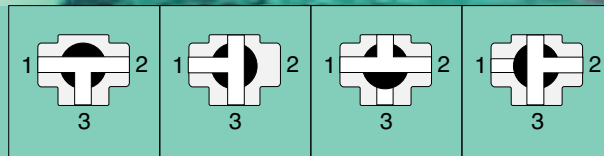


FLOW PATTERNS

L-Port



T-Port



Break Away Torque

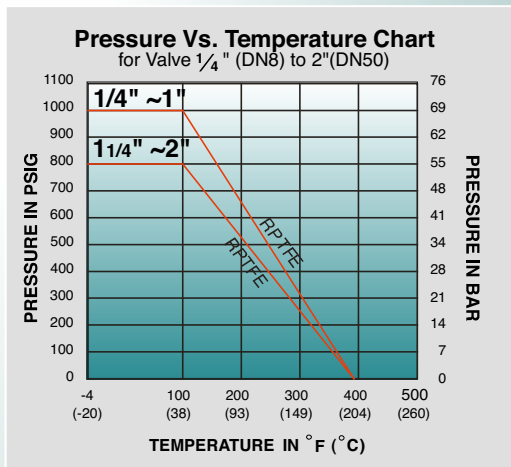
* Standard Mars valves are assembled with silicon-free based in lubricant, torque for dry assembled valves please consult factory.

Full Port	1/4"	3/8"	1/2"	3/4"	1"	1-1/4"	1-1/2"	2"
Nm	8	8	10	13	23	42	51	59
In-Lbs	75	75	92	115	207	369	449	518
Red Port	1/4"	3/8"	1/2"	3/4"	1"	1-1/4"	1-1/2"	2"
Nm	8	8	8	10	13	23	42	51
In-Lbs	75	75	75	92	115	207	369	449

Cv Factors

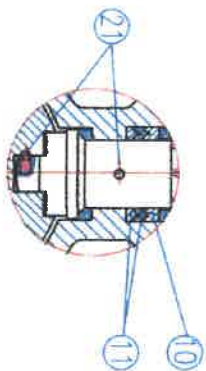
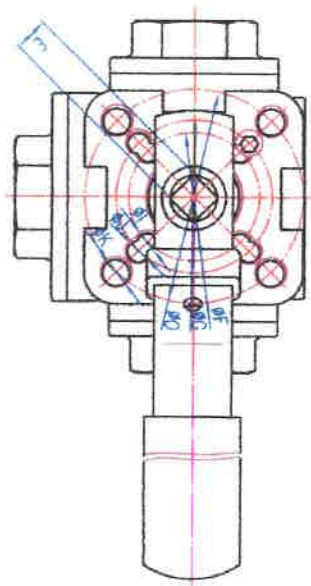
Valve Size	1/4"	3/8"	1/2"	3/4"	1"	1-1/4"	1-1/2"	2"
L-Port	7	7	11	15	30	47	70	133
T-Port (through)	8	8	13	19	34	54	84	158
T-Port (branch)	6	6	8	11	22	41	54	97

MATERIALS LIST

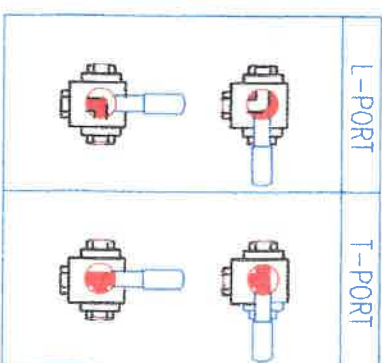


NO.	PART NAME	MATERIAL	Q'TY
1	End Cap	A351 Gr. CF8M	3
2	Gasket	PTFE	3
3	Body	A351 Gr. CF8M	1
4	Ball	SS316	1
5	Seat	PTFE / RPTFE	4
6	Stem	SS316	1
7	Stem Seal	RPTFE	1
8	O - Ring	VITON	1
9	Stem Packing	GRAPHITE	1
10	Gland	SS 304	1
11	Belleville Washer	SS 301	2
12	Stem Nut	SS 304	1
13	Nut Stop	SS 304	1
14	Stem Washer	SS 304	1
15	Lock Saddle	SS 304	1
16	Handle Nut	SS 304	1
17	Handle	SS 304	1
18	Handle Sleeve	Vinyl	1
19	Stop Pin	SS 304	1
20	Insert Pin	SS316	1
21	Pin Nut	SS 304	1
22	Anti - ststic Device	SS316	1

39M Series 3-Way T-Port L-Port FULL BORE / REDUCED BORE THREADED ENDS 1000PSI



A-VIEW

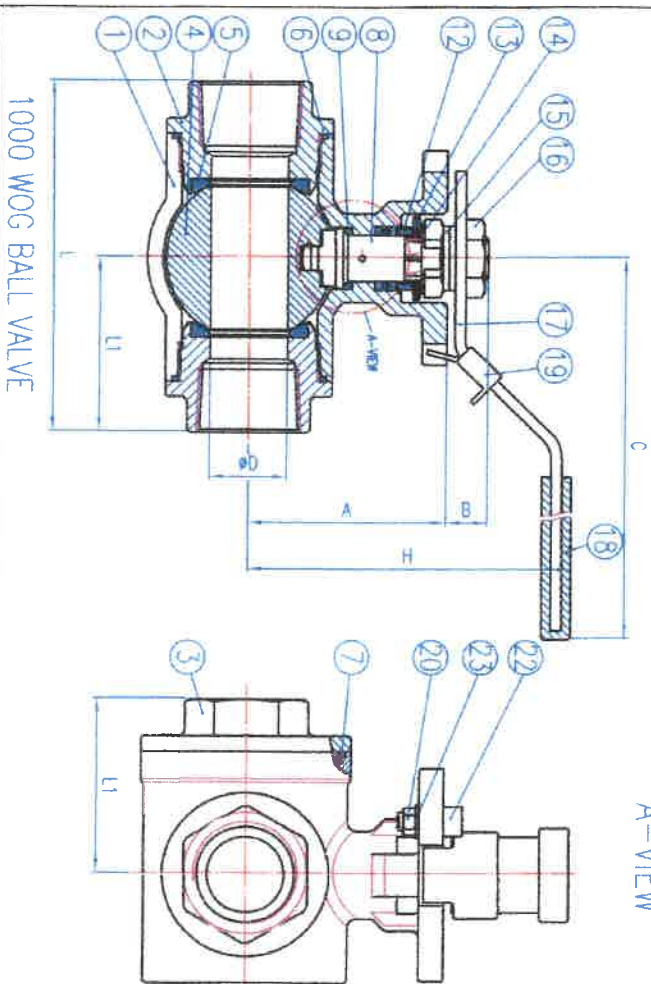


MATERIALS LIST

NO.	PART NAME	QTY	MATERIAL
1	BODY	1	CF8M
2	END CAP-A	2	CF8M
3	END CAP-B	1	CF8M
4	BALL	1	SS316
5	SEAT	4	RTFE
6	JOINT GASKET-A	2	PTFE
7	JOINT GASKET-B	1	PTFE
8	STEM	1	SS316
9	STEM SEAL	1	RTFE
10	STEM PACKING	1	PTFE (SEE ITEM 11)
11	STEM PACKING	⊕	PTFE
12	GLAND	1	SS304
13	ROD/NUT WASHER	2	SS301
14	LOCK SADDLE	1	SS304
15	STEM WASHER	1	SS304
16	STEM NUT	2	SS304
17	HANDLE	1	SS304
18	HANDLE SLEEVE	1	VINYL
19	LOCKING DEVICE	1	SS304
20	PIN NUT	1	SS304
21	Anti-static Device	2	SS316
22	STOP PIN	1	SS304
23	WASHER	1	SS304

PS:

- ⊕ For 1/4" to 3/8" - 1pcs
- ⊕ For 1/2" to 1-1/4" - 2pcs
- ⊕ For 1-1/2" to 2" - 3pcs



1000 WOG BALL VALVE

DIMENSION (mm)

SIZE	A	B	C	ØD	ØE	ØF	ØG	ØO	H	ØI	ØJ	ØK	F	R	T	R	SPCS11
1/4"	38.1	9	140	11	9	36	42	75	6	6	6	72	36	36	36	36	rw/rw
3/8"	38.1	9	140	12.5	9	36	42	75	6	6	6	72	36	36	36	36	rw/rw
1/2"	43.9	9	151	15	9	36	42	88	6.5	7	7	83	41.5	41.5	41.5	rw/rw/rw	
3/4"	54.2	10.5	166	20	11	42	50	93	6	7	9	98	110	49.5	55	55	rw/rw
1"	64.1	10.5	183	25	11	42	50	108	6.5	7	9	112	125	56	62.5	62.5	rw/rw/rw
1-1/4"	78.5	13.5	216	32	14	50	70	128	7.5	9	12	125	125	62.5	62.5	62.5	rw/rw
1-1/2"	94.9	18.5	263	38	17/19	70	102	154	10	12	12	149	149	74.5	74.5	74.5	rw/rw
2"	101.6	19.5	313	50	17/19	70	102	161	10	12	12	174	174	87	87	87	rw/rw

ORDER	DATE	REASON FOR CHANGE	CHANGE BY	REMARK	MATERIAL	DATE	2007/05/23	CHECKED BY	DRAW BY	Steve L
					DRAWING	V39M-F+R	DRAWING NAME	39M SERIES(FULL PORT & REDUCED PORT)		

