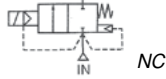


Media: air – water – light oil - steam
 Pressure range: 0.5 to 20 bar max
 Media temperature: +200 °C Max
 Ambient temperature: -40 ° to +60 °C
 Media viscosity: 50 centistokes max
 Mounting: coil upright
 Opening / Closing 200 mSec Max



2/2 Steam

3/8 - 2

NORMALLY CLOSED

2 WAY SERVO ASSISTED

0.5 – 20 Bar

TYPE SA



PRESSURE

Ø Port BSP	Ø Orifice (mm)	Flow Kv Ltr/ min	Pressure Rating (bar) Max ΔP			Part Number
			Min	Steam	Air/ Water	
3/8	15	75	0.5	12	20	SA14 + voltage
1/2	15	75	0.5	12	20	SA15 + voltage
3/4	20	155	0.5	12	20	SA20 + voltage
1	25	220	0.5	12	20	SA25 + voltage
1 1/4	35	433	0.5	12	20	SA35 + voltage
1 1/2	35	433	0.5	12	20	SA40 + voltage
2	50	800	0.5	12	20	SA50 + voltage

OPTIONS

IP68 (EN60529:1991+A1:2000) UL + CSA Approved Coil & IP65 LED Connector DIN43650A PG11 NPT Thread
 ATEX 22003EX Coil: ATEX EExmIIT4 II 2G & 2D IP65 T130°C
 WPA3C IP65 (100% Rated H rated IP54 coil with 30cm flying leads 33.6 Watts 57VA +200°C media)
 Stainless Steel Body, High Pressure, Flanged and other custom made options available upon request

ELECTRICAL DATA

Voltage (-10% + 10%) Continuous duty 90%	Coil	Power Consumption		Insulation class	Enclosure	Electrical connections
		Inrush	Holding			
~ 24 - 110 - 240 (50 or 60 Hz) DIN	WPG2	18.7VA	15.3VA	H 180 °C	IP 65 With Connector	3 spades DIN 43650 DIN 40050 VDE0110
= 12 – 24 (DC)		18 Watts				

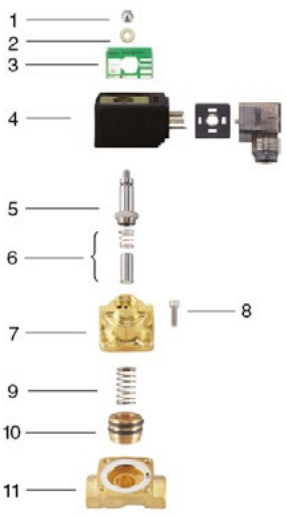
CONSTRUCTION

Body: Brass Tube and internal parts: Stainless steel
 Seals and gaskets: PTFE Moulded coil: Resin

REPAIR KIT

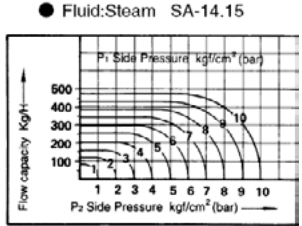
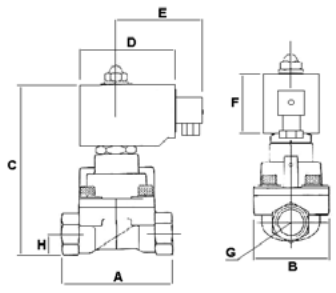
Coil	WPG2 + voltage
Piston	SP210 + Valve Part Number

OVERALL DIMENSIONS

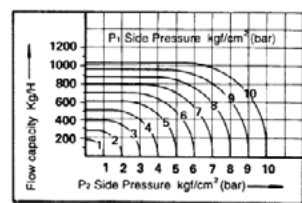


No.	Part Ref	Description
1	SP201-*	Nut
2	SP202-*	Washer
3	SP203-*	Nameplate
4	WPG2	Coil
5	SP205-*	Core Tube
6	SP206-*	Armature
7	SP207-*	Valve Bonnet
8	SP208-*	Screw
9	SP209-*	Spring
10	SP210-*	Piston
11	SP211-*	Valve Body

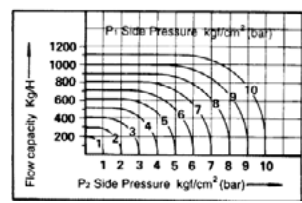
Model	A	B	C	D	E	F	G	H	Kg
SA14	67	48	123	67	52	42	3/8	15	1.13
SA15	67	48	123	67	52	42	1/2	15	1.1
SA20	96	72	149	67	52	42	3/4	25	1.53
SA25	96	72	149	67	52	42	1	25	1.85
SA35	120	90	168	52	45	41	1 1/4	33	3.3
SA40	120	90	168	52	45	41	1 1/2	33	3.25
SA50	150	122	203	52	45	41	2	40.5	6.8



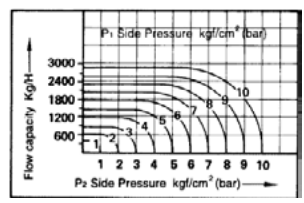
● Fluid: Steam SA-20



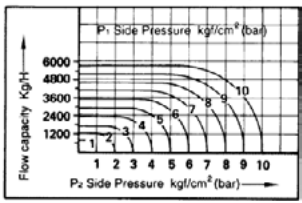
● Fluid: Steam SA-25(AF)



● Fluid: Steam SA-35.40(AF)



● Fluid: Steam SA-50(AF)



© Copyright (SA 2010) whole or partial reproduction of this catalogue or page without written consent is strictly prohibited.